

# Barnsley Health and Wellbeing Board

## Expression of Interest

### Barnsley Health and Wellbeing Board



**Stronger Barnsley Together**

**Pioneers in integrated care and support**

### Expression of Interest (EOI)







Ellen is 78 years old, has poor mobility and suffers from heart disease. She sleeps downstairs in the lounge, as her terrace house can't accommodate a stair lift.

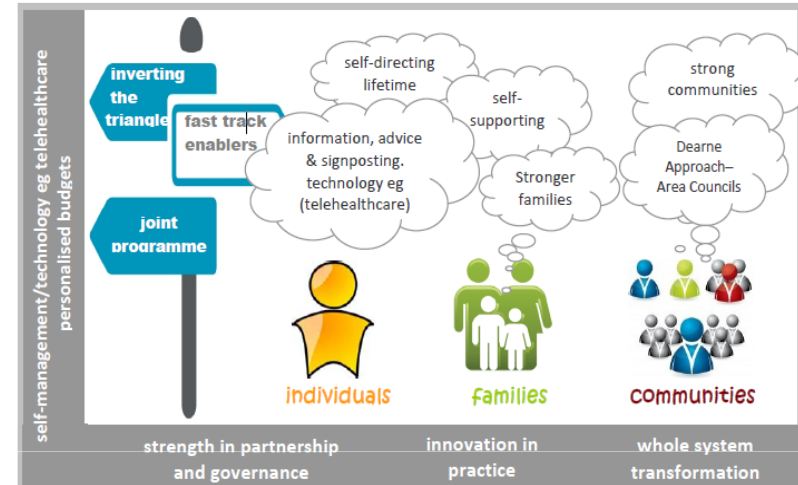
As part of her Safe and Secure at Home Telecare package Ellen has a Carbon Monoxide Detector, situated in her lounge above the gas fire. The detector activated an alert triggering a response from the Telehealthcare Centre. Transco, a service partner, was contacted and asked to attend as part of service protocols.

Ellen's fire was found to be emitting carbon monoxide fumes when it was lit, and a potentially life threatening situation was prevented.

# Aims and objectives

## Transforming the whole health and social care system

- Integration, co-production and reciprocity
- Community engagement, citizenship and behavioural change
- Integrated care pathways and user-centred services
- Residents – passive recipient to active agent
- Self-help and self-care
- Early intervention and prevention
- Aligning resources across agencies
- Reducing costs and personalising budgets.

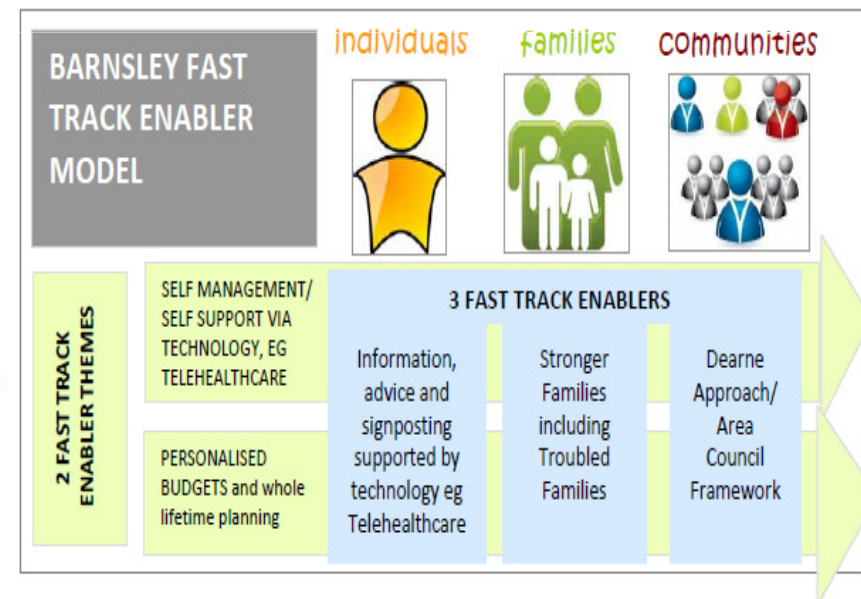


# What and by when

- |  |                 |
|--|-----------------|
| ■ Area Councils and Ward Alliances   | May 2013        |
| ■ Joint Programme Office   | Aug 2013        |
| ■ Joint Programme 'Stronger Barnsley Together'<br>- Ageing Well<br>- Promoting Independent Living<br>- Stronger Families | Aug – Oct 13    |
| ■ Develop model and metrics with residents   | Sept – Mar 14   |
| ■ Fully scope and implement fast track enablers  | Apr 14 – Mar 16 |
| ■ Independent evaluation and business as usual   | April 16        |

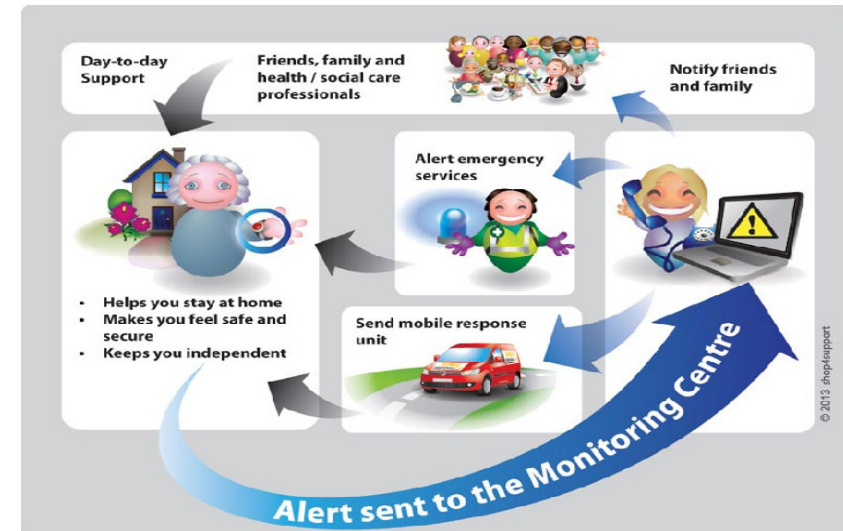
# Governance and accountability

- Health and Wellbeing Board
- Strong programme and project management
- Highlight and exception reports
- Joint Programme Management Office and SROs - council and Clinical Commissioning Group (inc. Acute Trust & Community Trust)
- Project managers and workstream leads
- IT systems integration



# Impact on individuals, families and communities

*"I feel like I have control over my life again and that everyone is working together to help me. A couple of years ago, I went into hospital a dozen times. This year, I've managed to stay at home, which is wonderful." Shirley*



*"I can't praise the staff at the children's centre enough for the support and advice they've given us. Working with them to get the right support for our son's needs has made an enormous difference to all our lives." Lindsay.*



*"At the time of applying to be a Community Researcher I'd just left university, was volunteering three days a week for local groups and bringing up my four children... it was the opportunity I'd been waiting for... it brought in local people to talk to residents about local issues and the training provided gave us the basic knowledge we needed to go out into the community... if more information like this was shared, people could make more informed choices about how to make more productive use of their council services." Kelly*

# Measuring success - how will we know we have made a difference?

*I have the information and support I need in order to remain as independent as possible*

*I have access to a range of support that helps me to live the life I want and remain a contributing member of my community*

*I am in control of planning my care and support*

*I am supported by people who help me to make links in my local community*

*I can plan ahead and keep control in a crisis*

*I can decide the kind of support I need and when, where and how to receive it*

- Co-design the metrics with residents
- Support from the University of Leeds, Turning Point, National Voices and Shared Lives
- Focussed around the 'I statements'
- Build on the community researcher's approach in the Dearne (connected care model)
- Alignment with the national outcomes frameworks
- Cost benefit analysis and financial modelling
- Family cost calculator
- Predictive risk stratification
- Independent evaluation

# Track record of delivery

## Partners



## External partners

- Turning Point
- University of Leeds
- Shared Lives
- National Voices

Dearne Approach

Telehealthcare

Personalised Budgets

Stronger Families/Troubled Families

Connect to Barnsley

Home Truths

Right to Control Trailblazer

Integrated Youth Strategy

Excellence in training & development

Customer Services Organisation

# Challenges and opportunities

- Dependency on public sector
- Asset based approach to community engagement
- Public sector cuts and benefit changes
- Current system – not sustainable
- Ageing population and inequalities
- A flourishing H&WB and partnership landscape
- Mutual accountability and leadership
- Strong and mature commissioner – provider relationships
- Real transformation and co-production
- Barnsley centric
- Pace and scale of change
- International social value model
- Healthwatch

